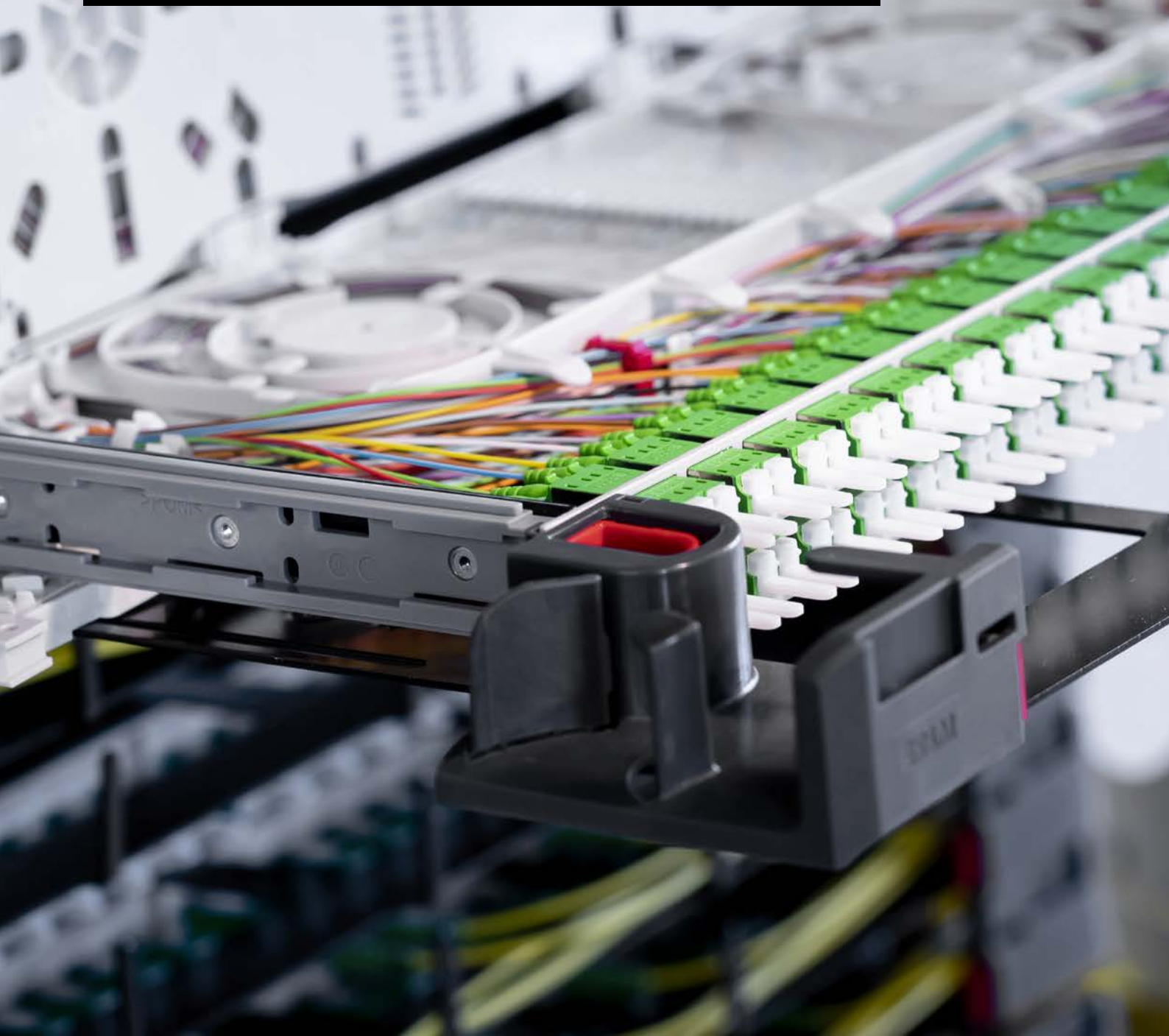


PRIME ODF

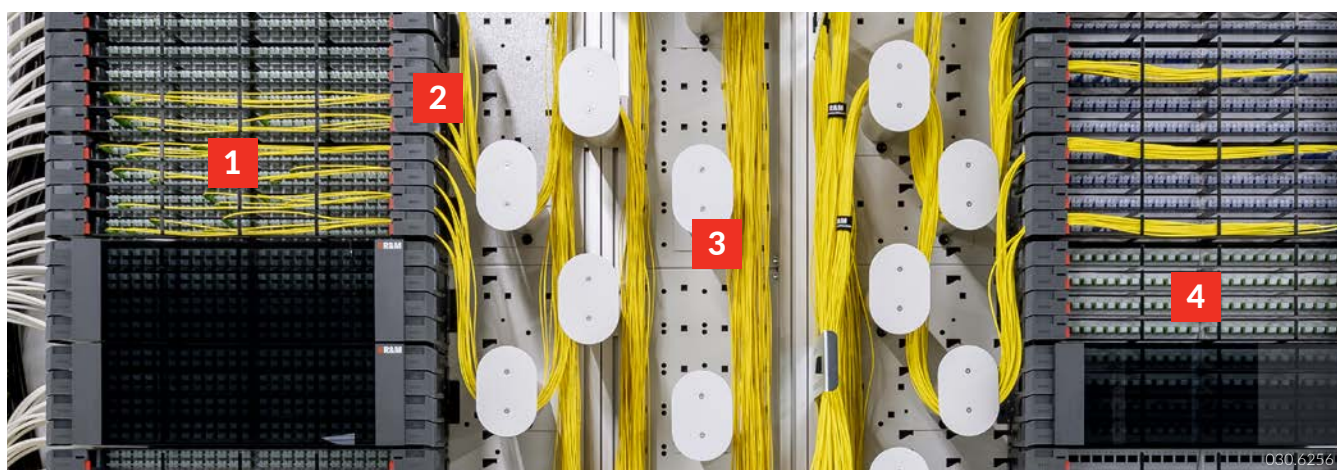
The New Generation of
Optical Distribution Systems



PRIME ODF

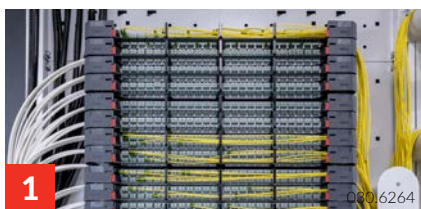
Key features and benefits

The compact and versatile PRIME optical distribution modules are suitable for the flexible use of fiber optic terminations. They enable fast and simple installation in cramped environments as well as at sites with high fiber density. The tool-free system approach and the high modularity guarantee uncomplicated migration into new and existing network infrastructures.



Top fiber density

Up to 192/384 fiber connections on 3U (height units) or up to 2,688/5,376 connectors in a 2.20m PRIME ODF rack.



Optimized space

Also suitable for locations with limited space thanks to high concentration.



Modular use

The individual modules are easy to combine, extend and swap.



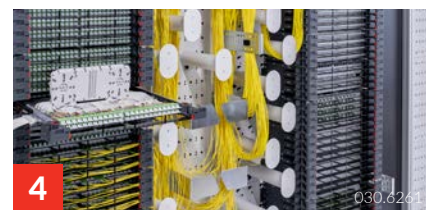
Tool-free migration

Tool-free installation of system components in the R&M ETSI rack.



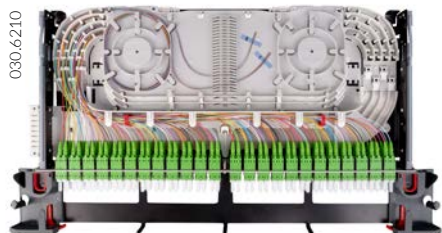
Consistent and flexible

Optimized fiber management concept, protects the fibers during splice and maintenance work in the PRIME ODF rack.



Mirrored system configuration

Separate area for installation cables and patch cords. More reliability during operation.



PRIME-FTU (Fiber Termination Unit)

Splice/patch solution. Fully integrated splice area and direct front access. Up to 48 SC, E-2000 or LC-D adapters as well as 96 splice connections. Protection of the fibers in splice and maintenance work thanks to flexible fiber routing.



PRIME-FSU (Fiber Splice Unit)

Pure splicing solution. Thanks to MCM trays, can be upgraded to a maximum number of fibers of 96 ANT (crimp) or 192 HS (shrink) splice connections. The fiber routing channel under the splice carrier protects the fibers on the way to the splice area.



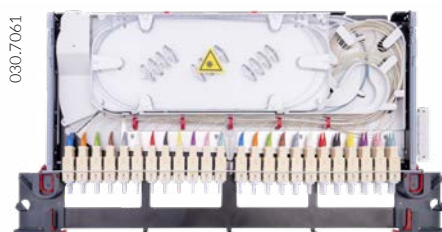
PRIME-FBU (Fiber Breakout Unit)

Simple connection of pre-terminated cables. Routing and connection of cables from the front and rear to the connectors depending on the rack type (ETSI, 19 inch). Securing of the fanout cables with a strap.



PRIME-FOU (Fiber Overlength Unit)

Storage tray for surplus loose tube cables or unconnected patch cords. The tray can accommodate up to 30m excess fiber.



PRIME-RFU (Ribbon Fiber Unit)

The new PRIME-RFU is optimized for fast installation and network migration for ribbon fiber applications. The splice tray has an fully integrated splice holder for 8F / 12F of Ribbon Splice Protectors. Capacity up to 96 fibers in the splice patch variant with LC duplex or SC adapters and up to 288 splice connections in the pure splicing variant.

PRIME ODF

Key benefits



Diversity

- Migration both to existing and new network infrastructures
- Front or rear mounting in 19" and ETSI racks
- Modular application (pure splice, splice patch, breakout applications, fiber storage)



Simple installation

- Front access to connectors
- Tool-free installation of the 3U sub-rack
- Simple and secure routing of loose tube cables to the splice trays
- Fine distribution of the fibers to the individual modules
- Terminal block for transport tubes



Reliable operation during maintenance work

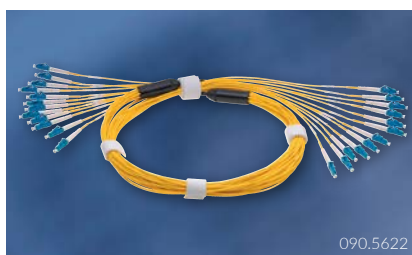
- Greatest network availability thanks to optimized fiber routing (moving channel)
- Connection detection without having to pull out the drawer thanks to front access
- Simplified cleaning and inspection thanks to service position of connectors
- Consistent fiber management concept in the R&M ODF rack
- Fast fiber recognition thanks to an intelligent labeling concept

Complementary products



Raceway

Fast and reliable fiber guidance between optical network components.



Pre-terminated cables

Plug-and-play solution enables simple installation of multifiber cable connections indoors.



Patch cords

Enables fast patching of local connections.



We are represented by almost 3000 qualified partners worldwide.
Find your local partner at: www.rdm.com





Optical distribution Frame

The R&M **ODF** is an **O**ptical **D**istribution **F**rame and the abbreviation stands for an entire modular distribution system which has been specifically designed to set up optical network infrastructures. The CombiMODULE is one of the three core ODF MODULES. It constitutes a splice-patch solution and is designed for use in various applications. Assembled from the splice MODULE and the patch MODULE as a complete unit, it is available as left, right, empty or fully populated version. It is ideal for loose tube cables and blow-in applications, they can be set up and managed easily and reliably. Plus, the snap-in fastening system ensures a fast and safe installation of all ODF MODULES, without requiring additional tools.

Technical data

Criteria		Date / value
SpliceMODULE & PatchMODULE	Material	Plastic, ABS/PC
	Color	Anthracite gray/RAL 7016
Fiber guide inlet	Material	Plastic, ABS/PC
	Color	Light gray/RAL 7035
Mounting plate blow-in	Material	Plastic, ABS/PC
	Color	Light gray/RAL 7035
Patch insert	Material	Steel 1.5 mm, powder coated
	Color	Light gray/RAL 7035
Side cover	Material	Steel, blue zinc-coated
Module and cover fastening	Material	Steel, blue zinc-coated
Housing	Protection class	IP20
CombiMODULE empty	Weight net	6.8 kg
	Weight packed	8.2 kg
CombiMODULE fully assembled	Weight net	10.0 kg
	Weight packed	11.4 kg
Packaging size	H x W x D (mm)	300 x 560 x 560 (mm)

Standards

Standard	Description
IEC 61300-2-1, IEC 61300-2-9	Vibration- and shock testing operation conditions
IEC 60068-2-64, IEC 60068-2-7	Vibration- and shock testing transport
EN 60529	Housing protection
IEC 60068-2-2, IEC 60068-2-1	Climate testing
IEC 61300-2-22, IEC 61300-2-19	Change of temperature and damp heat

Mechanical characteristics

Criteria	Date / value
Light weight construction	90% plastic and 10% steel
High stability and resistance	Plastic- steel construction

Environmental characteristics

Criteria	Date / value
Operation temperature	-25°C up to +70°C
Transport and store temperature	-40°C up to +85°C

Assembling variants

CombiMODULE	Date / value
Max. number Splice trays	
SC tray 6/12 fibers (SCM)	48
SE tray 24 fibers (SCM)	24
Max. number Patch insert	
12 x LC Duplex (24 fibers)	12
24 x LC Duplex (48 fibers)	12
24 x SC Simplex (24 fibers)	12
24 x SCRJ (24 fibers)	12
24 x E2000 compact (24 fibers)	12
Max. number fibers	576
splice & patch connections	
Max. number cable entries	
5mm tubes	72

Mounting possibility

Stand-alone (wall mounting), cross connection cabinet etc.

Cabinet-ODF-900x300x2200mm, 900x300x1800mm, 900x300x1200mm, 900x300x700mm

Cabinet-ODF-600x300x2200mm, 600x300x1800mm

Dimensions CombiMODULE

